



TECHNICAL SPECIFICATION

**20' × 8' × 9'2" ACCOMMODATION CONTAINER
WITH 1 PAIR OF FORKLIFT POCKETS**



SPECIFICATION NO. : SH-101/114/111...
MODEL NO. : SH-101/114/111...
ISSUED ON . : May.18th,2018



ISO DIMENSION

Flat pack container is a multi-function standard container, which dimensions conform to the ISO shipping container. And it also has connections for lifting and fixing or compounding. This makes it suitable for international container transport.



SH101	LENGTH	WIDTH	HEIGHT
EXTERNAL DIMENSIONS	6058mm	2438mm	2791mm
INTERNAL DIMENSIONS	5858mm	2238mm	2520mm
WEIGHT	2000kg		

ECONOMICAL TRANSPORTATION

We provide excellent methods of logistics, normally 4 kits will be connected into one trans-pack whose dimension is same as a 20 ft GP (6058mmX2438mm*2591mm) .This makes them ideal for ocean freight. Star house packs are transported in bundles of 4 “ flat-pack ” units which can reduce the transport costs to 25%.



X4=



\$
25%

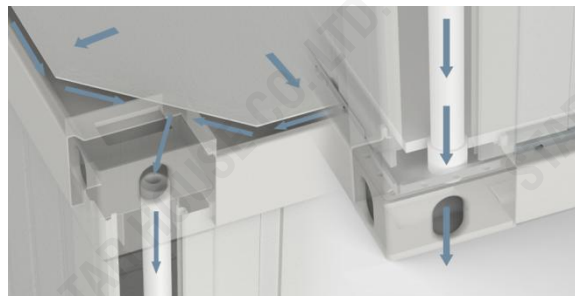


INDEPENDENT DRAINAGE SYSTEM

Flat pack container has independent drainage system which includes the gutter at the roof and the foot of the wall. Four draining pipes were installed in the four pillars to connect the roof and floor. This allows the flat pack containers not only to be used independently, but also to be used in multiple combinations without any worrying about leakage.



The special design of the gutter leads the rain from panel surface to the ground, to prevent the rain leakage from the joint between wall and bottom.



The rainwater on the roof flows into the roof gutter through the gutter in the roof beams, and passes through the drain pipe to the floor block and finally drains to outside.

FLEXIBLE COMBINATION

The flat pack container is designed as a light construction consisting of floor and roof frames and pillars. This construction enables compounding of individual containers in longitudinal and transverse directions without limits. It also enables compounding of containers in 2 floors or 3 floors in height.





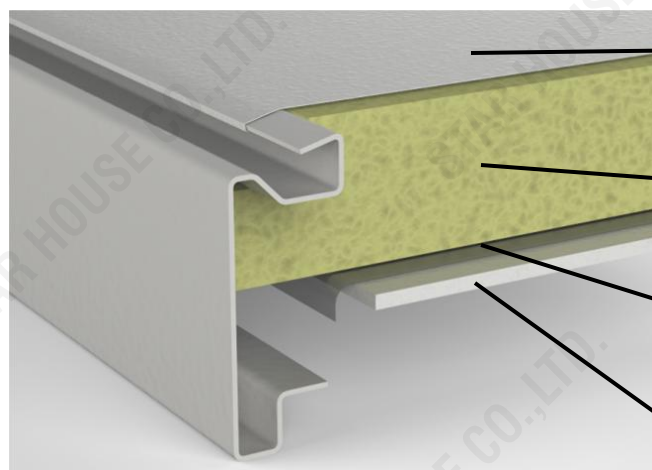
STEEL FRAMEWORK



Material	Roof Frame Beam	3mm thick Q235A steel
	Pillar	3mm thick Q235A steel
	Floor Frame Beam	4mm thick Q235A steel
Surface Working	Zinc Coat	6-8μm thick
	Primer Coat	20-30μm thick
	Finishing Coat	50-70μm thick
Fittings	8 corner fittings (dimensions according to ISO standard 1161), rainwater pipe in the roof framework, plate thickness of 10mm excluding top corner fittings of the top kit of each bundle (20mm thickness)	
Forklift Openings	openings for fork-lift pockets in the floor framework, dim. 80×250mm in a distance of 1200mm	



ROOF SYSTEM



0.5mm thick galvanized and painted steel sheet

100mm thick mineral wool (density: 40 Kg/m³)

80µm thick dampproof PE Foil

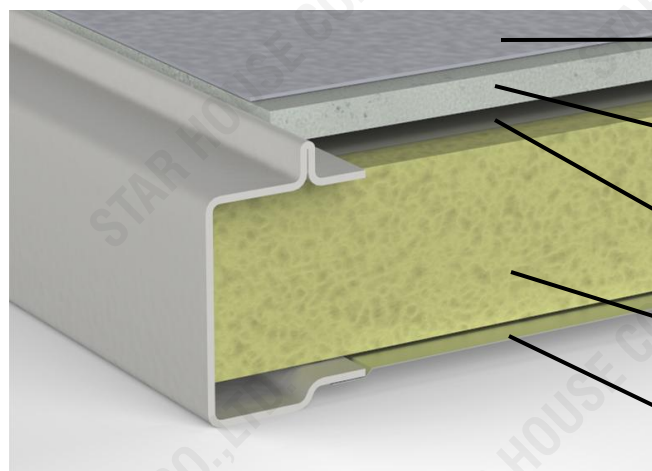
9mm thick white chipboard

Permitted loading: 1.50KN/m²

K value(Thermal conductivity) : 0.039W/mK

R value(Thermal Resistance): 2.56m²K/W

FLOOR SYSTEM



1.8mm thick glued PVC flooring covering

18mm thick cement board

80µm thick dampproof PE Foil

100mm thick mineral wool (density: 40 Kg/m³)

0.5mm thick galvanized steel sheet

Permitted loading: 2.50KN/m²

K value(Thermal conductivity) : 0.039W/mK

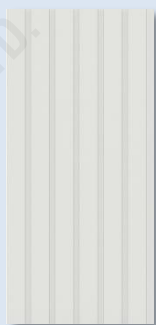
R value(Thermal Resistance): 2.56m²K/W



WALL SYSTEM



There are 5 panels in both long sides and 2 panels in both short sides of flat pack container and they are fully interchangeable . If there are cables preassembled in roof and wall panels , they should be assembled according to the electrical layout.



X11 +

Wall Panel



Wall Panel With Door

X1 +

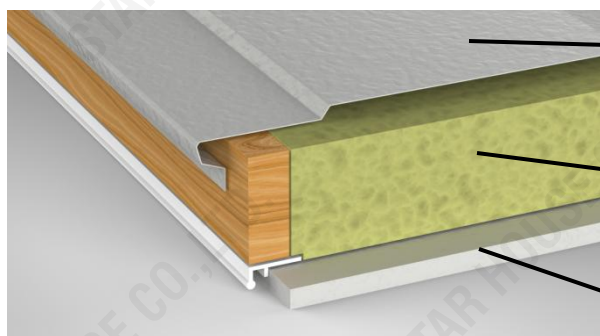


X2

Wall Panel With Window

*Door : 830X2030mm(internal clearance dimensions 760X1990mm) aluminum single fold door(40mm EPS insulated door leaf) furnished with a handle lock and 3 keys

*Window : 800X1100mm white color PVC sliding window (5/9/5mm double glass)with external aluminum rolling shutters



0.5mm thick galvanized and painted steel sheet

50mm thick mineral wool (density: 40 Kg/m³)

9mm thick white chipboard

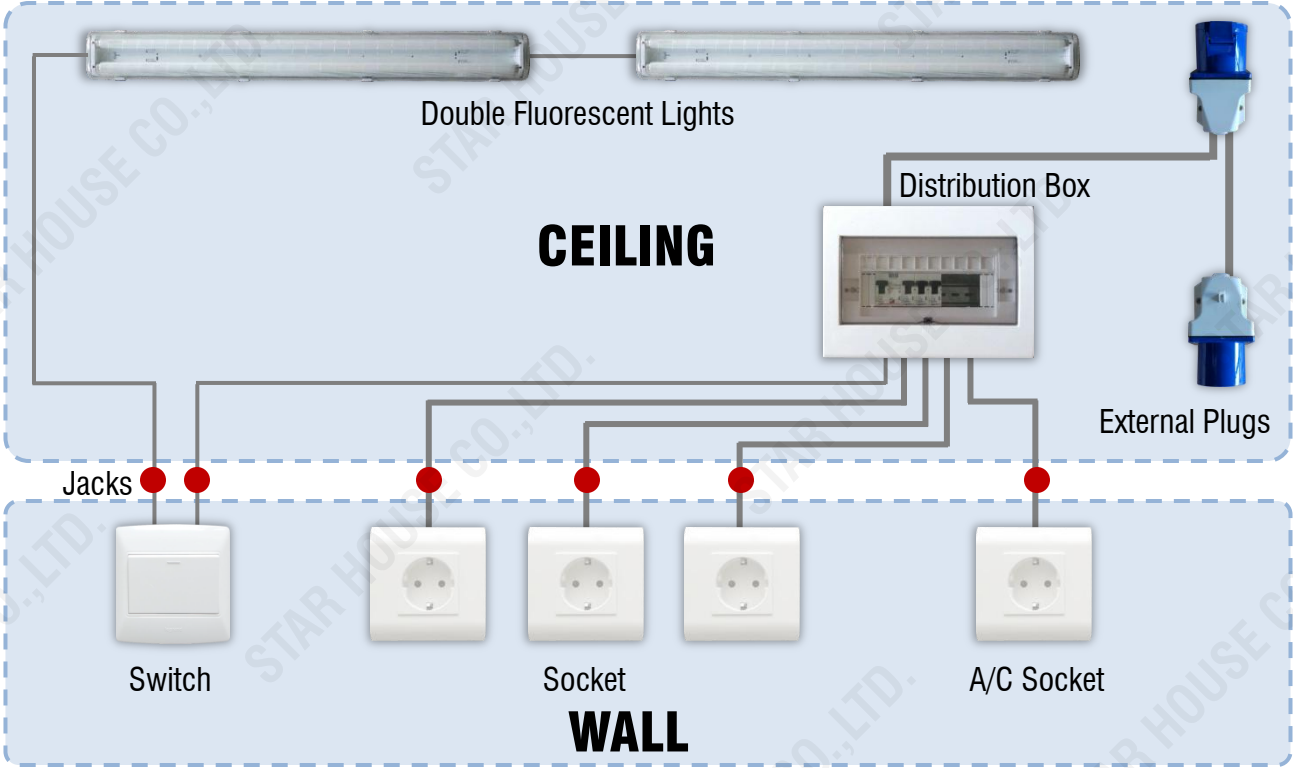
Permitted loading: 1.00KN/m²

K value(Thermal conductivity): 0.039W/mK

R value(Thermal Resistance): 1.54m²K/W



ELECTRICAL INSTALLATIONS



Standard	VDE 100 and CE regulations
Voltage	220V,60Hz, single phase
External Connections	CEE-connection plug/socket, 3-pole 32 A, 220V~, mounted on the top frame in upper corners of a shorter side wall
Inner Distribution System	BVVB cables of suitable dimensions (6, 2.5, 1.5 mm ²), CE marked, flush-mounted. All cables (located on the ceiling and inside wall panels) run into CE certified plastic conduits. Roof cables and panel cables are connected with CE compliant "jacks".
Protection	protective current switch (40/2E-0,03A), automatic fuses (B-characteristics) of suitable power (10A/1P, 16A/1P)
Earthing	galvanized connector with a steel plate of dimensions 50 x 20mm welded on the bottom frame
Distribution box	40/2E-30mA protective current switch X1 + 10A breaker X1 + 16A breaker X2
Lighting	2X36W,220V double fluorescent lights X2
Socket	220V,16A socket X4
Switch	220v,10A switch X1



SANITARY

Sanitary Fittings	Shower Cabin	Toilet	Wash Basin
Dimensions (W*D*H)	920X920X2000mm	420X730X590mm	510X400X800mm
Material	Aluminum frame , aluminum + ABS panels	Ceramic	Ceramic

RE: All the above sanitary wares are standard items, they can be replaced according to client's requirement.



Plumbing And Drainage	Plumbing (Hot Water)	Plumbing (Cold Water)	Drainage	Sewage
Diameter	25mm	25mm	50mm	110mm
Thickness	4mm	4mm	2mm	2mm
Material	PPR	PPR	PVC	PVC

Re: All suitable length depending on fittings.



WARRANTY

Complete – All components have 1 year warranty.

WIDE APPLICATION



INTEGRATED CAMP



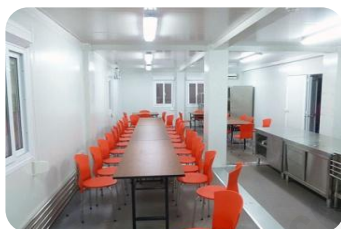
OFFICE



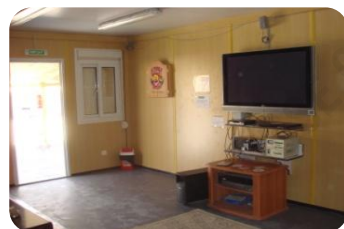
CLASSROOM



HOTEL



DININGROOM



RESIDENCE



SHOP

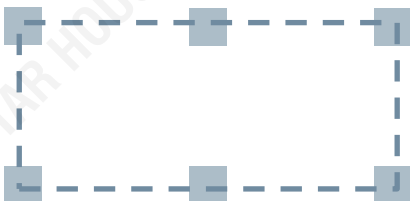


TOILET AND SHOWER

CONTAINER MOUNTING



On a flat solid surface (asphalt, concrete ...)



On point foundations (concrete cubes, dimensions 60/60/30cm, 6 pcs/20' container)



On band foundations (concrete band, 60cm wide, on the container circumference)



MORE OPTIONS

HEIGHT	 2591mm External Height	 2896mm External Height	
ROOF	 Container Roof		
CEILING	 Steel Ceiling	 Sandwich Panel	
FLOORING	 Marbling Carpet	 Wood Grain Carpet	 Aluminum Embossed Sheet
WALL PANEL	 Oak Chipboard	 60mm Sandwich Panel	 100mm Wall Panel
EXTERNAL DOOR	 Double Door	 Steel Door	
WINDOW	 Tilt & Swing Window	 Aluminum Security Bar	
INSULATION	 PU Foam	 EPS	 Glass Wool
ELECTRICITY	 UL Standard (USA)	 CSA Standard (Canada)	 SAA Standard (Australia)

***Besides the above common options, we can also customize any other requirements.**